

SWITCH MIDLANDS
SCHOOL SERVICES 2021/22

WORKING TOGETHER TO SUPPORT

***BEHAVIOUR,
PERSONAL
DEVELOPMENT
& WELLBEING***

SWITCH
**#POWERING
#POTENTIAL**



Switch Midlands has been an important part of the Wolverhampton education landscape for over a decade, an achievement everyone at the service is extremely proud of. Although 2020 was not the way we had hoped to celebrate our tenth anniversary, it did give us the opportunity to reflect and plan for the future.

We are all hugely excited to be offering our new look services for schools, including a range of positive and cost effective approaches to behaviour, personal development and wellbeing support.

As an organisation we have looked a great deal at our values and the impact of our alternative provision model. Whilst alternative provision is an option that offers vital support for a number of pupils, it is not always the right path for many, and costs can spiral for schools.

That is why last academic year we worked with the national charity Barnardo's, with funding from the DfE, to help develop our early intervention outreach. Our **Switch Coaches** will help to support **Switch Squads** in primary schools and **Switch Ambassadors** in secondary schools. Due to the positive impact this trial had, we have launched the service into even more schools and hope you will give us the opportunity to work with you and your pupils this coming year.

TIM WAKEFIELD
Founder & CEO

OUR SOCIAL VALUE



Switch Midlands is a community interest company and as such we operate entirely in the interests of our social mission. We reinvest more than half of our profits towards our social purpose and we are transparent about how we operate. Social enterprises don't just offer financial value for your spend, but social value too. For example, we regularly use income to help deliver out-of-school activities, such as free holiday clubs throughout the summer.

We are redefining the boundaries between alternative provision and mainstream education and our social mission is to prevent school exclusions through a process of outreach, early intervention and ongoing support. Working with pupils from primary, through to secondary and even beyond, we have developed a truly unique approach that will change the way in which behaviour, personal development and wellbeing is delivered.

Our social impact is perfectly demonstrated by our **Switch Ambassadors** programme. This is an opportunity for those pupils who have received our support to continue and develop even further by working towards an award in mentoring. These pupils will then act as advocates throughout your school for positivity, motivation and conduct. Not only that, but our **Social Impact Pledge** is that each year we will employ at least one **Switch Ambassador** of secondary school leaving age to train via an apprenticeship route and become a **Switch Coach** in their own right.

By working alongside us, you are not only helping to support your own pupils, but also other children and young people, whilst also choosing the most cost effective approach to improving behaviour, personal development and wellbeing in your school.



HOW DOES IT WORK?

THE APPROACH

A trained and experienced **Switch Coach** will work with your pupils in groups or 1-to-1, depending on need, to deliver our structured social & emotional learning package. Those pupils will have been identified as benefitting from specialist early intervention support to prevent future problems that may negatively impact on their learning, such as disengagement, challenging circumstances and even exclusion.

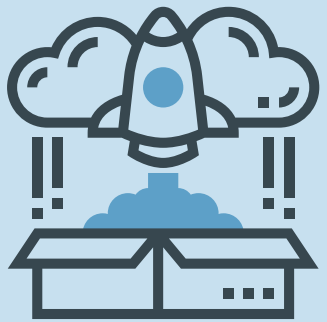


WHY A SWITCH COACH?

You already have amazing pastoral, behaviour and attendance provision in the building. We are not replacing that, but enhancing it. Time constraints, sheer number of pupils, and the complexity of situations, means the majority of your staff's time can be taken up with the minority of pupils. By using our service to provide a highly targeted, outcome driven approach, it will result in more positive results across the whole school.

EVIDENCE BASED

We've developed our approach over 10 years of alternative provision experience. Our programmes are all based on a therapeutic and nurturing service that has been proven to work. Not only that, but the **Switch Coach** model is designed around health care and social prescribing approaches that put beneficiaries at the very centre and provides them with the tools they need to thrive and flourish.

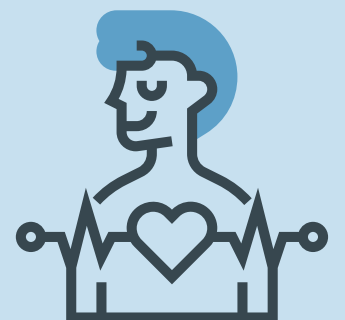


PERSONAL DEVELOPMENT

Our programmes provide your pupils with opportunities to enjoy learning about, and make informed decisions around, their own personal development, behaviour, welfare and mental health. Through monitoring progress, we will clearly evidence this via our own purpose built online portal and assessment tool, which makes reporting outcomes to you very specific, measurable and timely.

SOCIAL & EMOTIONAL LEARNING

Social & emotional learning is essential for every child. It helps children achieve their academic potential, build strong relationships and lead healthy, successful lives. It forms the foundation component of our programmes - targeting personal traits, motivation and guides conduct so that pupils reflect wisely, behave with integrity and cooperate consistently with others. Self-management, continuity, building trusting relationships and fostering networks in the school community are all important principles of our support.



SWITCH SQUADS & AMBASSADORS



The beauty of our approach is that it does not just stop once a programme of work is completed with a pupil, or group of pupils. It is designed to reward and develop them even further by giving an opportunity to become champions for behaviour, personal development and wellbeing.

After receiving initial support from a **Switch Coach**, pupils can then work towards a recognised awards in mentoring and become part of a **Switch Squad** in primary or a **Switch Ambassador** in secondary schools. This process will mean a culture of positivity and good conduct cascades throughout your whole school.



DON'T JUST TAKE OUR WORD FOR IT

In autumn 2020 we piloted our approach with support from the national charity **Barnardo's** and the **DfE**. Working with over 20 schools and over 150 pupils, the results speak for themselves.

90% of pupils said "**I feel safer**" as a result of taking part.

100% of pupils said our support had "**Made things better.**"

94% of pupils said they felt "**Better about life**" after receiving our support.

87% of pupils said they "**Felt more supported at school**" after the programme.

88% of pupils said they were "**More likely to speak to someone**" about their feelings following our help.

92% of pupils said "**The support was helpful**" after working with us.

CONTACT US



For more details on how we can work with you and your school, contact the Switch Midlands team hello@switchmidlands.com, visit our website switchmidlands.com or follow us on social media [@switchmidlands](https://www.instagram.com/switchmidlands).

